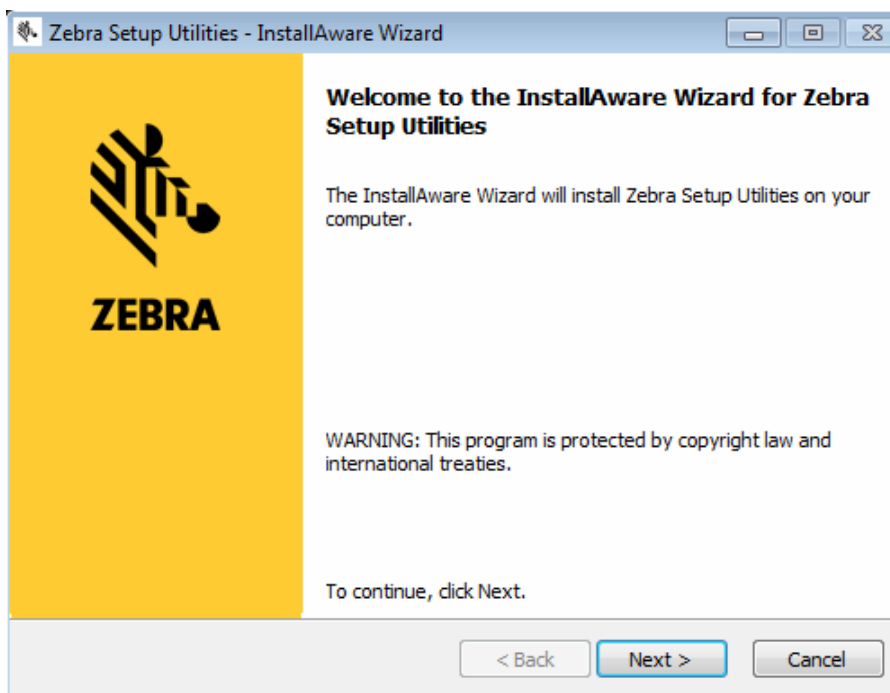


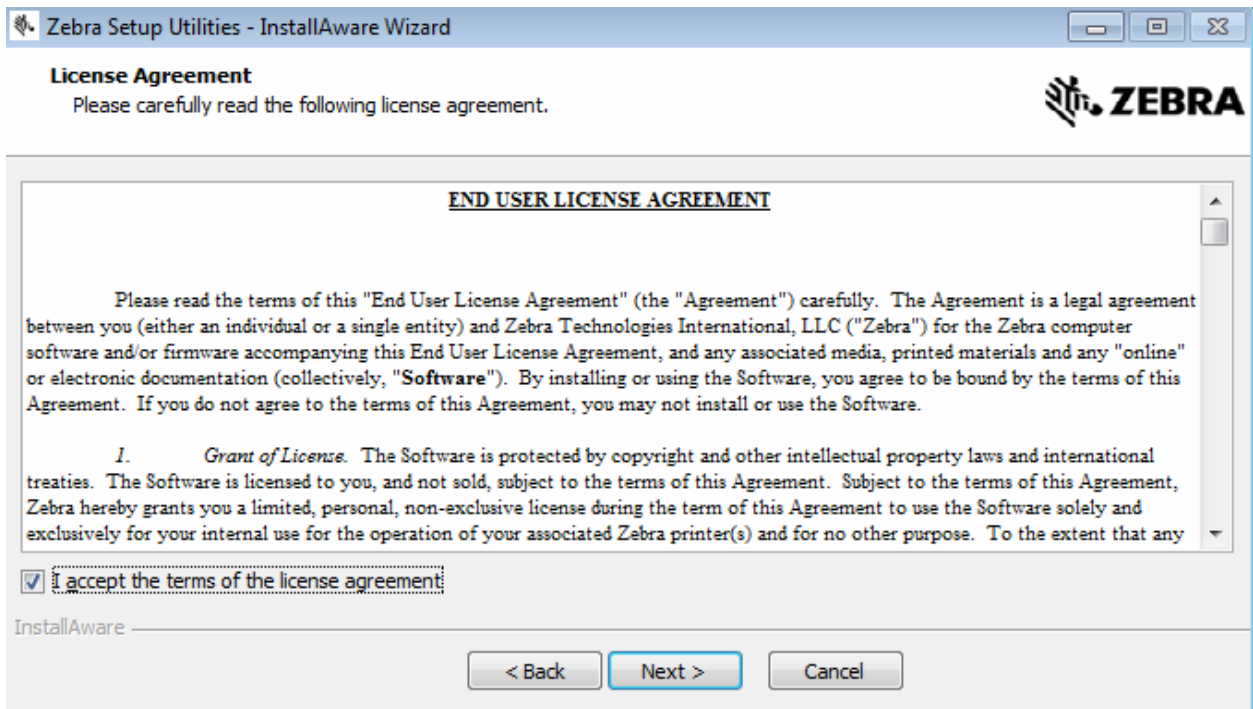
How to Update Zebra ZD410 Printer Firmware

DO NOT POWER ON THE ZEBRA PRINTER OR CONNECT THE USB CABLE UNTIL INSTRUCTED TO DO SO!

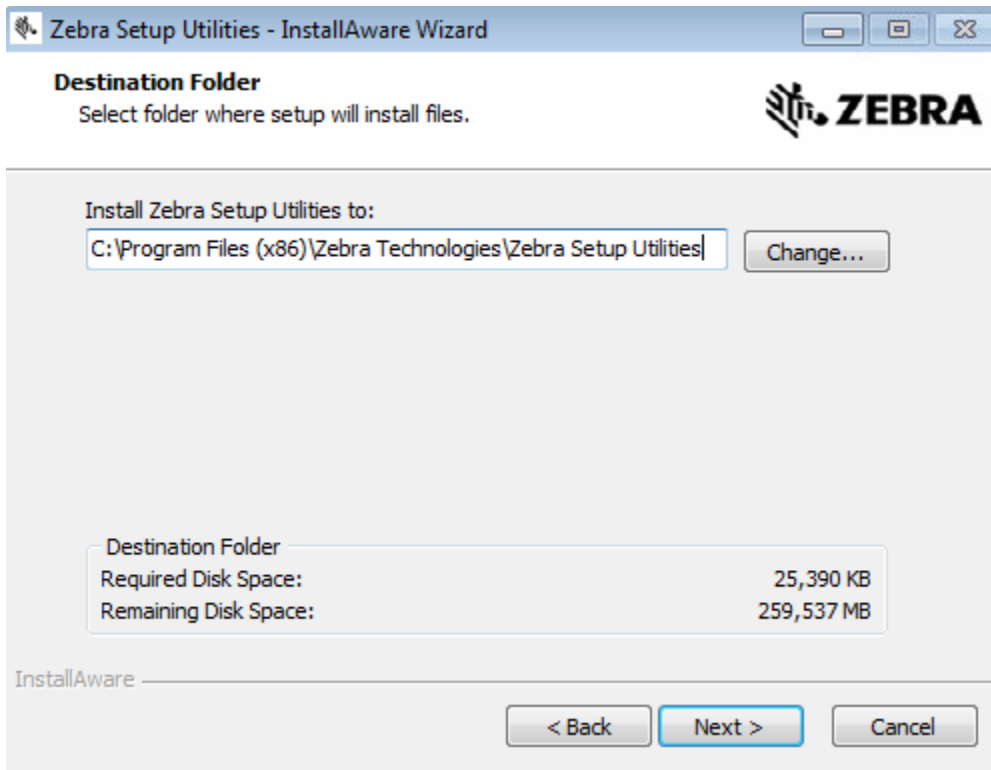
1. Download Zebra Setup Utilities from the following URL:
<http://print.managementsolutionsofva.com/downloads/zsu-1191204.exe>. Save the .EXE file to your Desktop and double-click the file to open the Zebra Setup Utilities installer after the download has completed. The installer will load. Click **Next**.



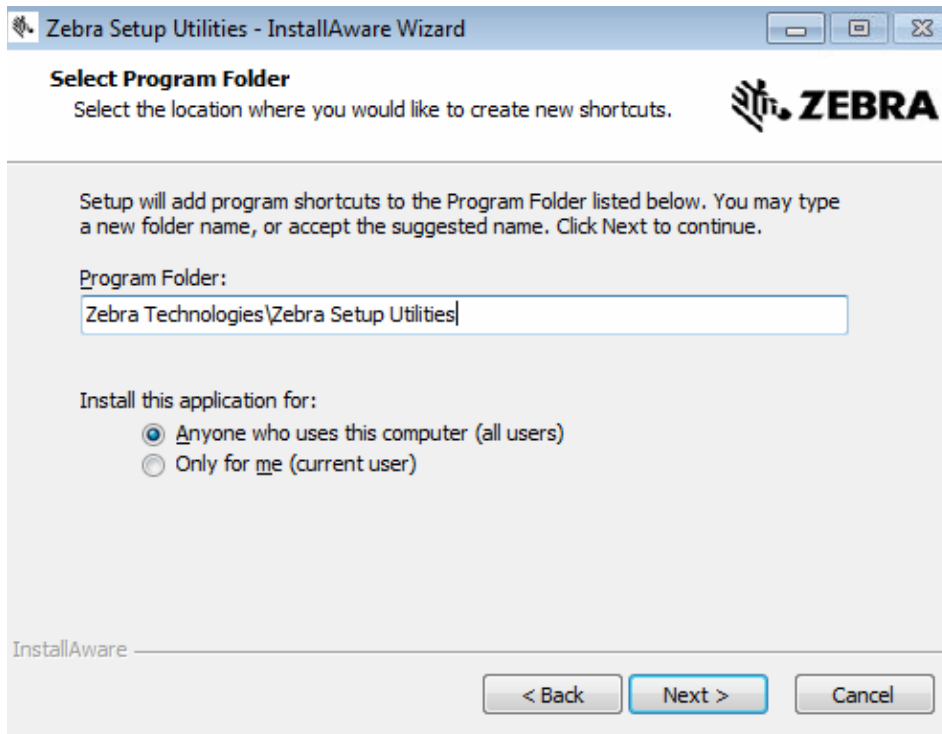
- Place a check in the **I accept the terms of the license agreement** checkbox and click **Next**.



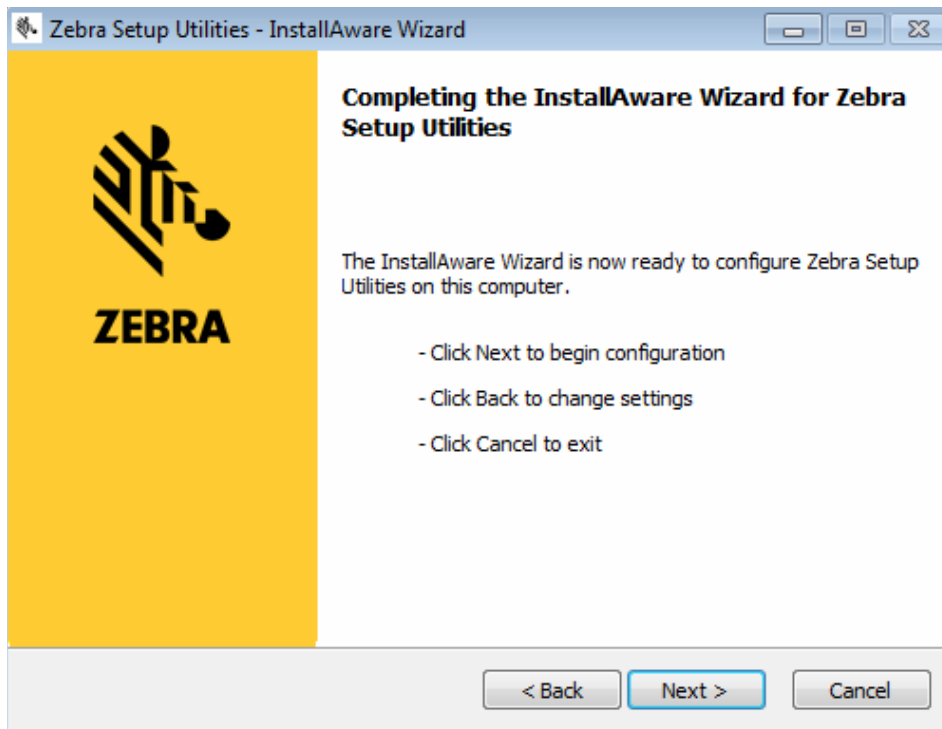
- Verify your preferred installation directory and click **Next**.



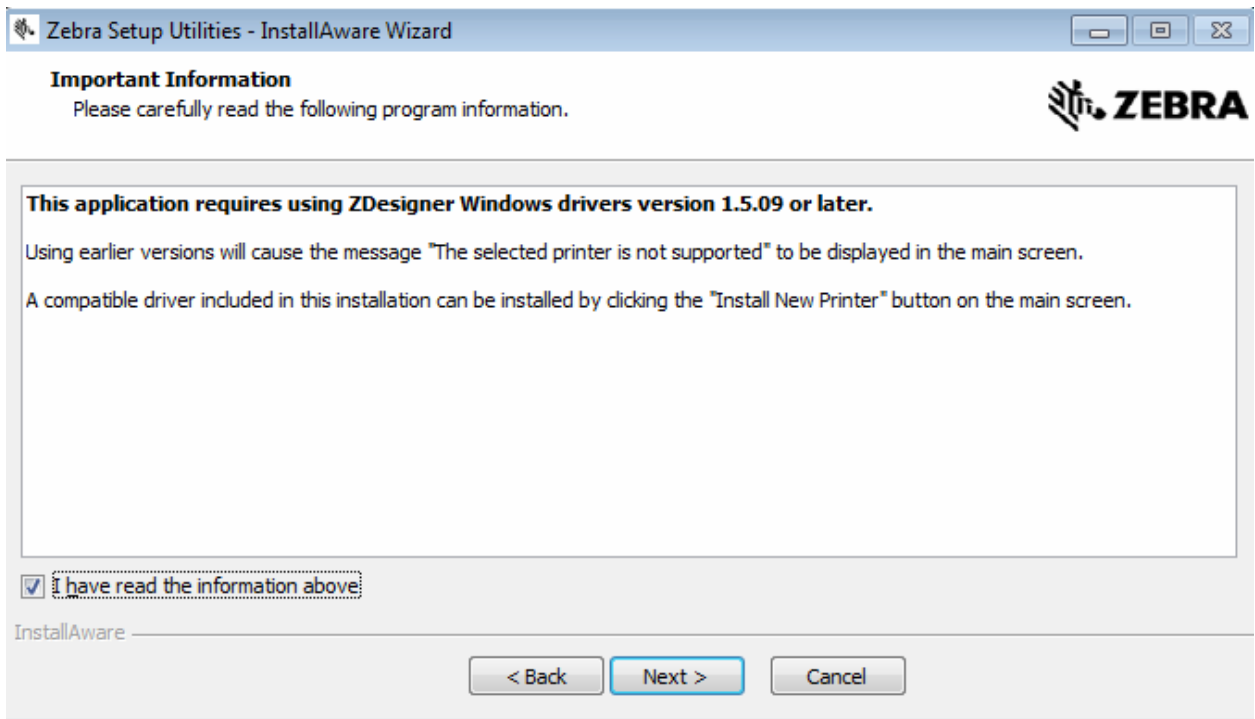
4. Verify your preferred Program Folder. Verify that **Anyone who uses this computer (all users)** is selected and click **Next**.



5. Click **Next**.



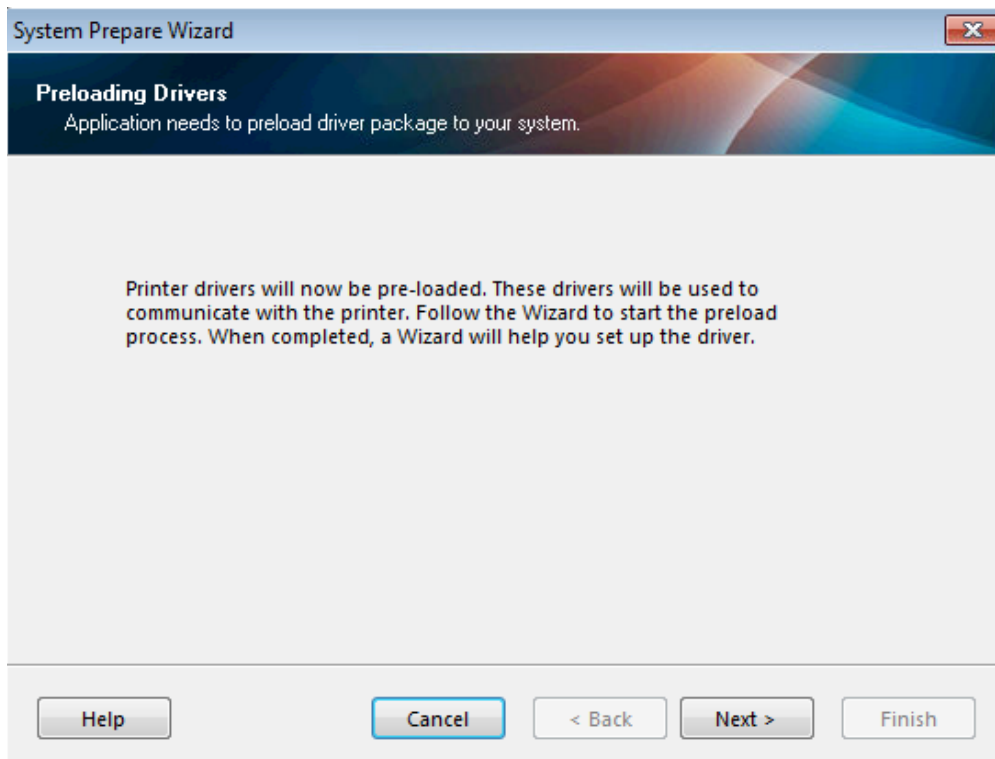
6. Place a check in the **I have read the information above** checkbox and click **Next**.



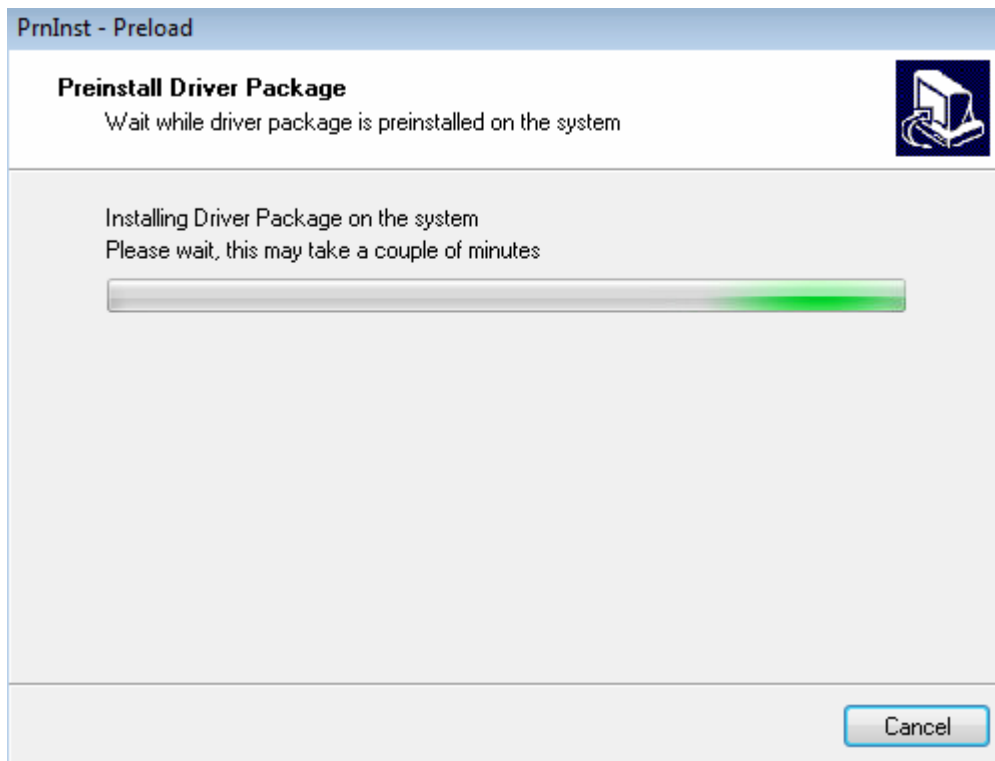
7. Place a check in the **Run Zebra Setup Utilities now** checkbox and click **Finish**.



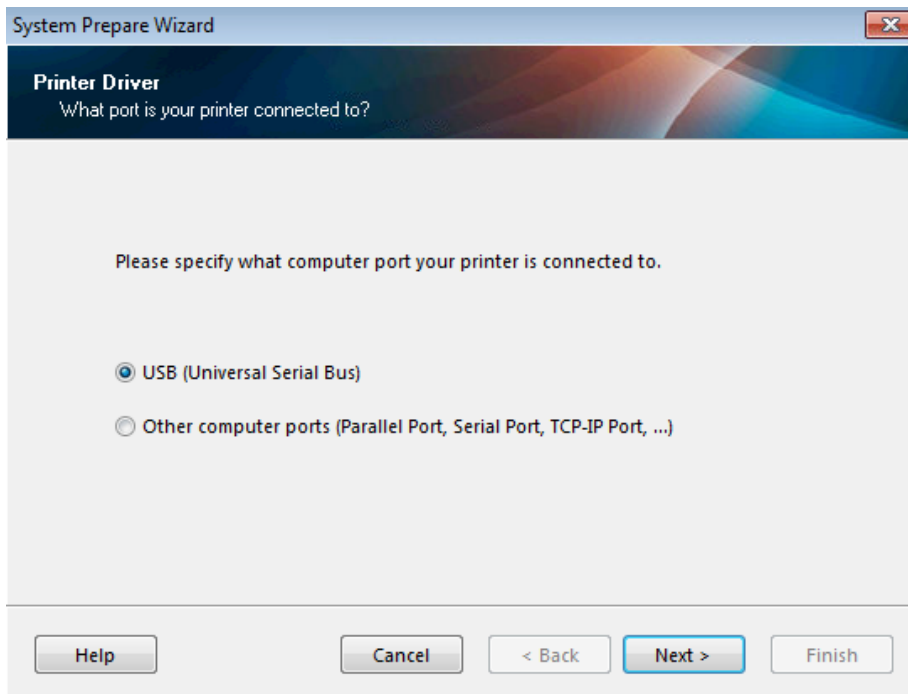
8. Click **Next** to preload the Zebra printer drivers.



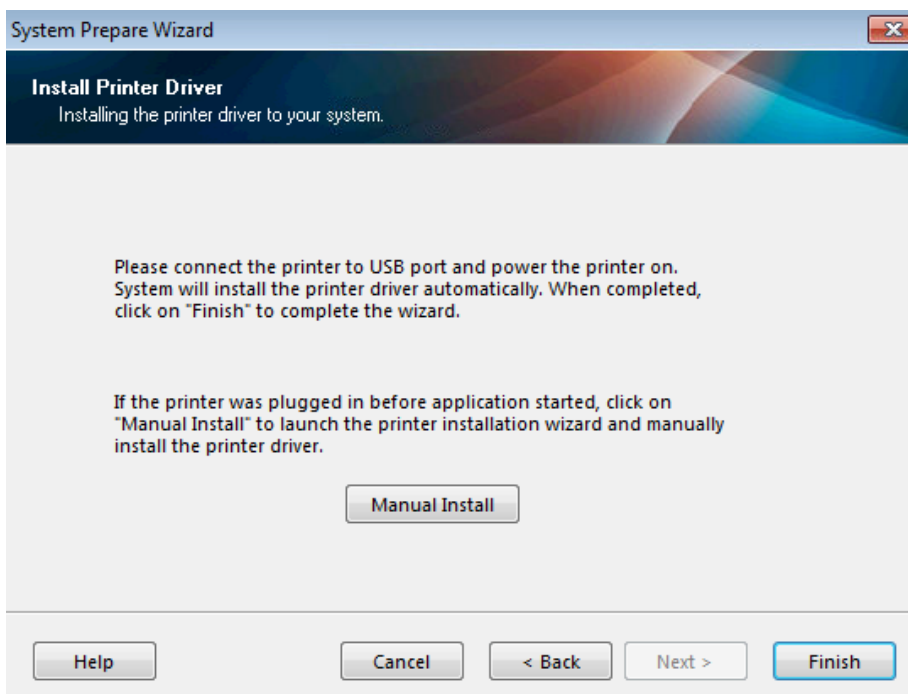
9. Allow the drivers to install.



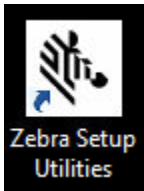
10. Verify that **USB (Universal Serial Bus)** is selected and click **Next**.



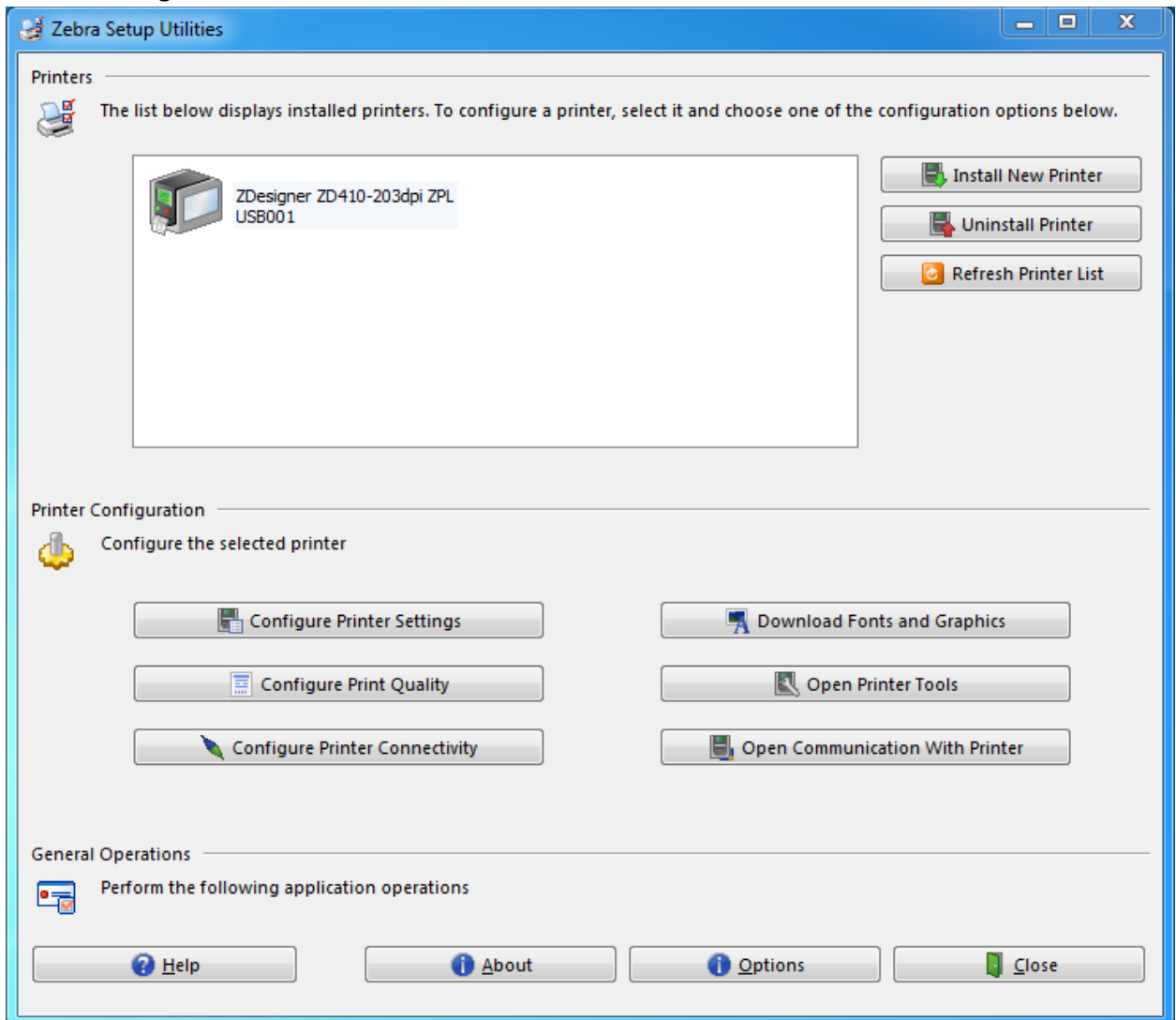
11. Insert a new roll of labels into your Zebra printer. Connect one end of the supplied USB cable to the Zebra printer and the other end to your local computer. Power the Zebra printer on and click **Finish**. Windows will now install the printer, which can be located and verified by clicking the **Start** button and selecting **Devices and Printers**.



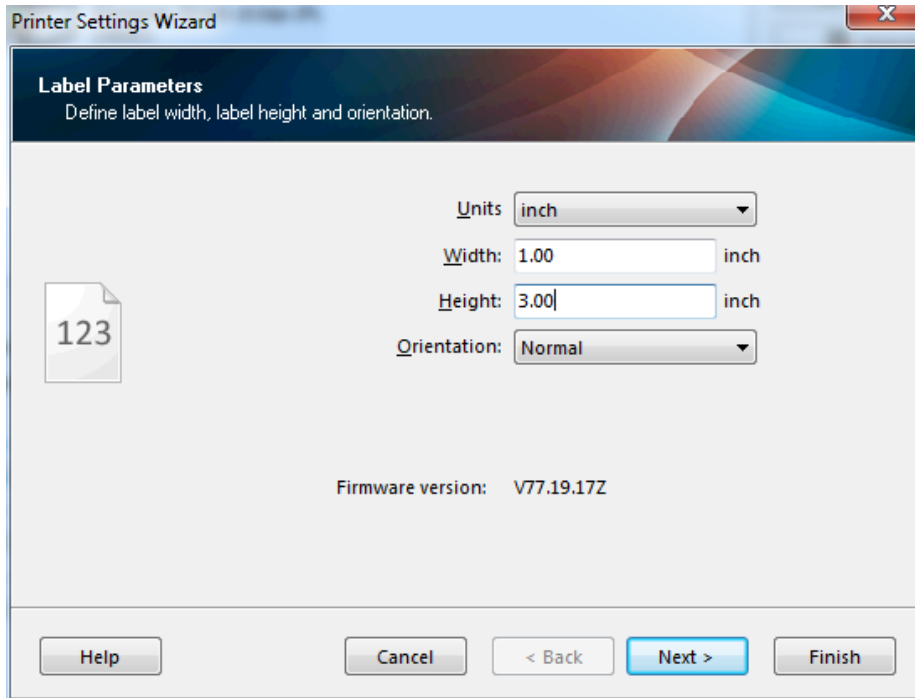
12. The Zebra Setup Utilities application should automatically start. If it does not, navigate to your computer's Desktop and double-click the newly created Zebra Setup Utilities icon.



13. Click on your Zebra **ZDesigner ZD410-203dpi ZPL** printer, so that it is highlighted, and click **Configure Printer Settings**.



14. Verify that Units are inch. Enter **1.00** for **Width**. Enter **3.00** for **Height**. Verify that Orientation is Normal. Verify whether or not you have the latest Firmware version by comparing the firmware version listed with the firmware version of the latest update found here: <http://docs.enviromap.com/en/latest/requirements/index.html#printer-firmware-update-instructions>. Click **Next** until the button is grayed out, and unable to be clicked, and click **Finish**.



Printer Settings Wizard

Label Parameters
Define label width, label height and orientation.

Units: inch

Width: 1.00 inch

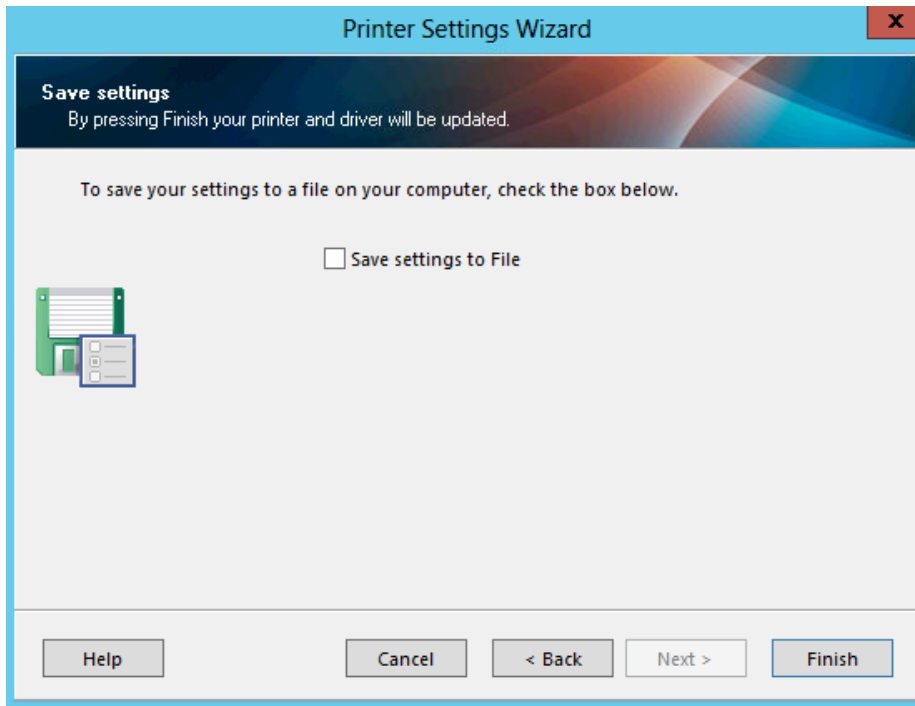
Height: 3.00 inch

Orientation: Normal

Firmware version: V77.19.17Z

Buttons: Help, Cancel, < Back, Next >, Finish

TO



Printer Settings Wizard

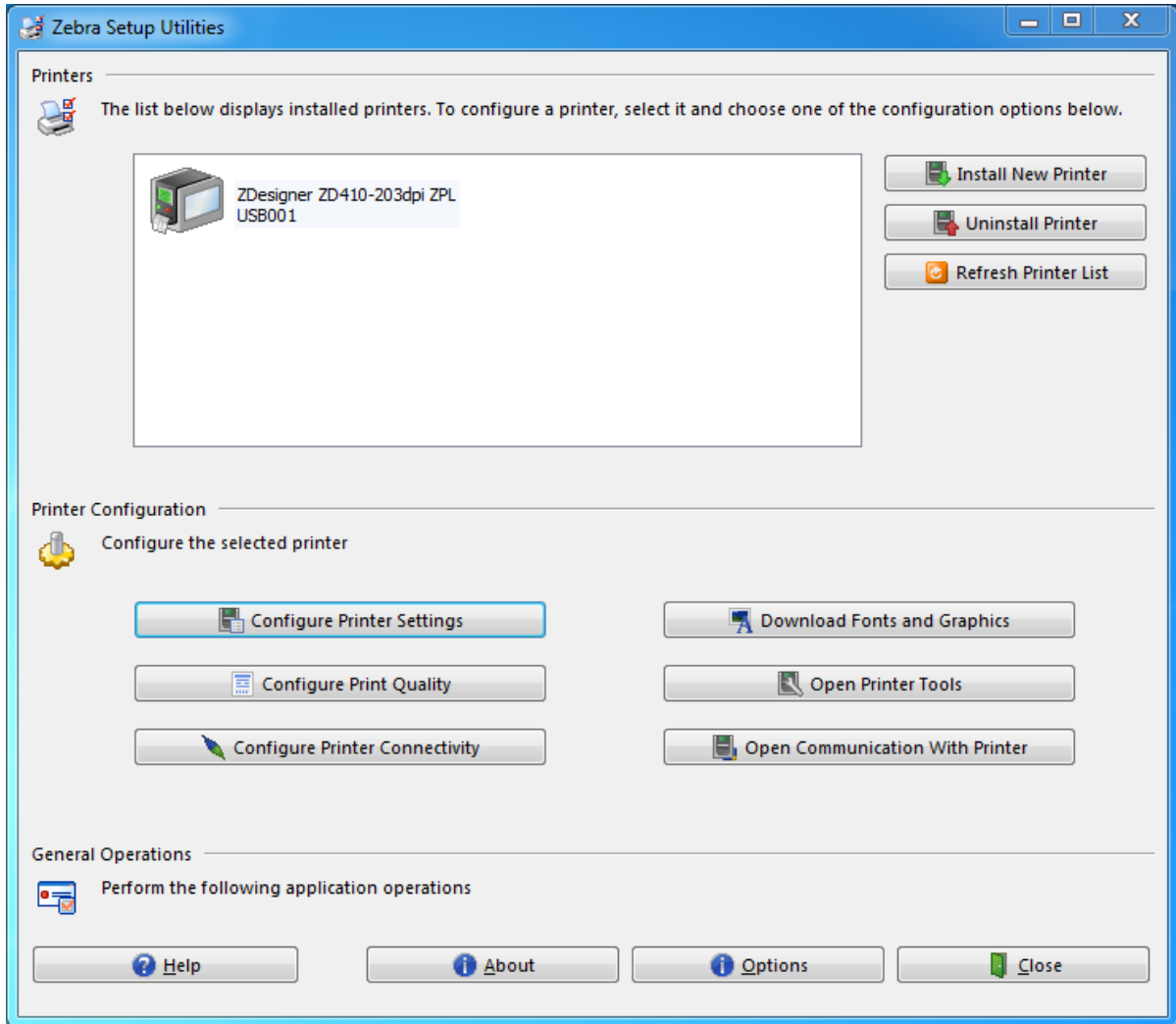
Save settings
By pressing Finish your printer and driver will be updated.

To save your settings to a file on your computer, check the box below.

☐ Save settings to File

Buttons: Help, Cancel, < Back, Next >, Finish

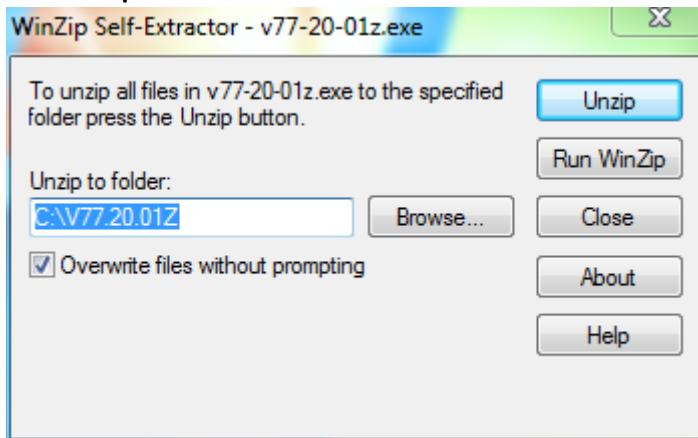
15. If the firmware listed on the requirements website is newer than the firmware listed under the Printer Settings Wizard, close Zebra Setup Utilities and follow the remaining steps below. If the firmware is already up to date, you are all set and do not need to continue with these instructions.



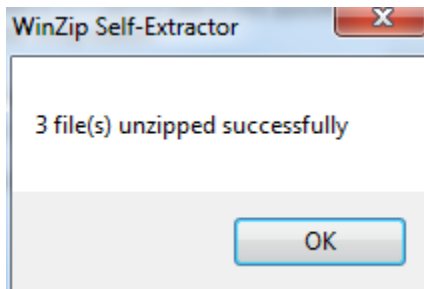
16. Download the latest firmware update for your printer from:
<http://docs.enviromap.com/en/latest/requirements/index.html#printer-firmware-update-instructions>
17. Once you have downloaded the latest firmware update file, double-click the executable to extract the firmware update.



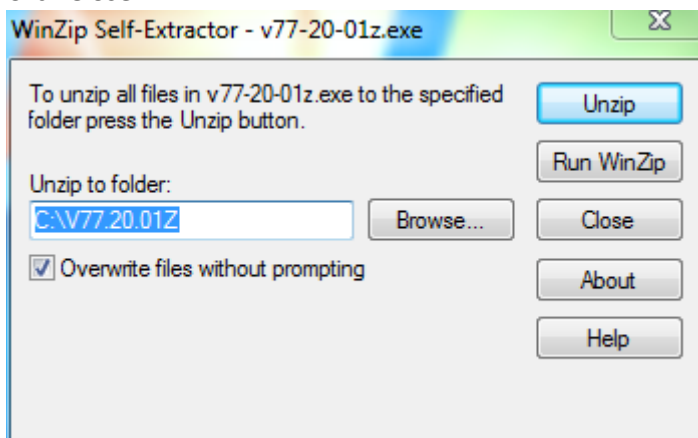
18. Click **Unzip**.



19. Click **OK**.



20. Click **Close**.

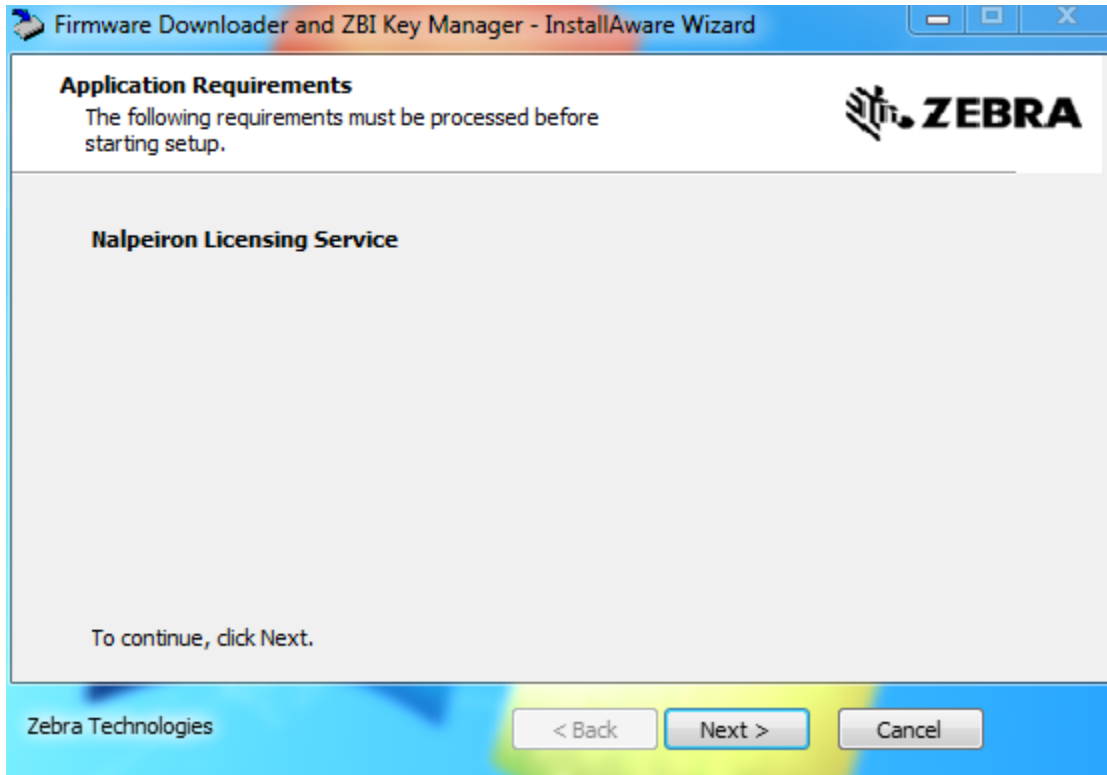


21. Download the Zebra ZDownloader firmware update utility here:
<http://print.managementsolutionsofva.com/downloads/zdownloader-30128.exe>

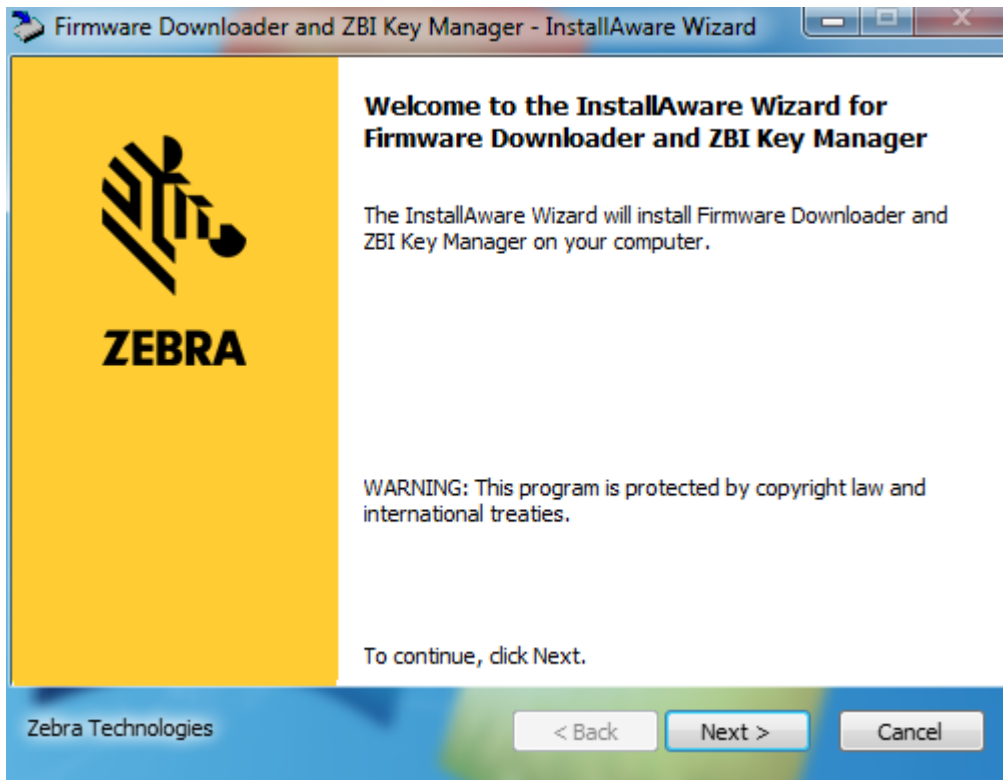
22. Once you have downloaded the firmware update utility, double-click the executable to start the install.



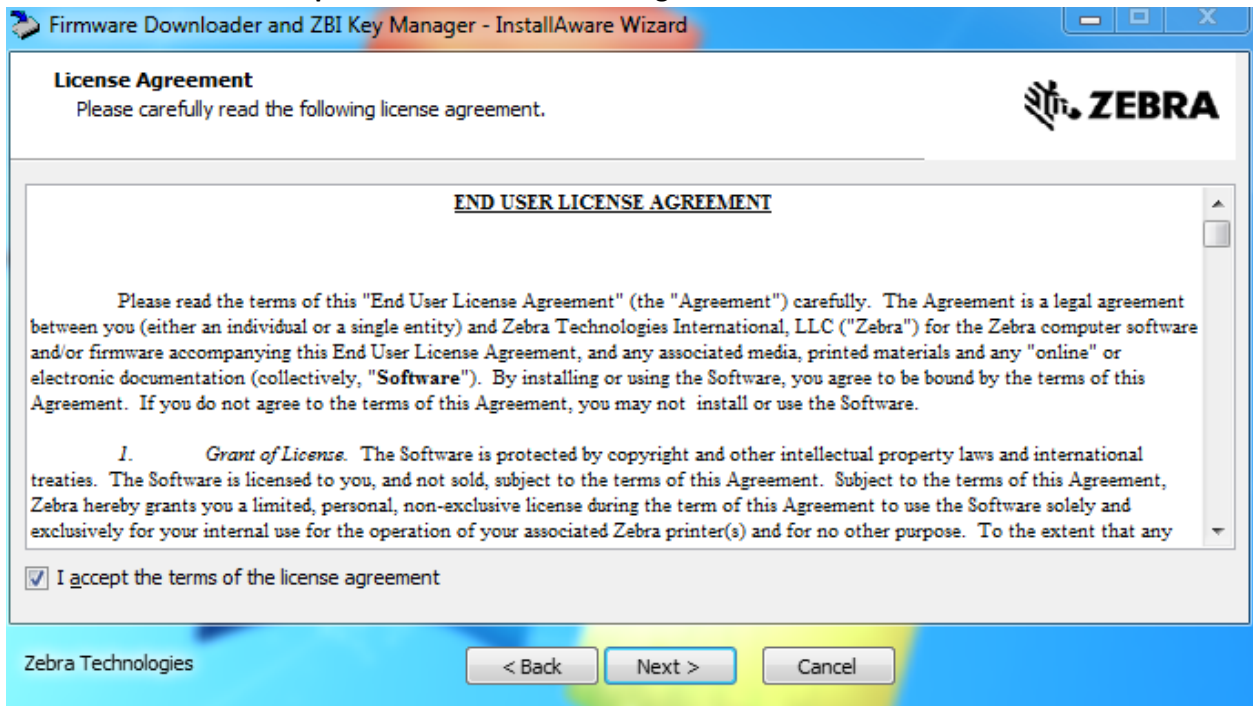
23. Click **Next**.



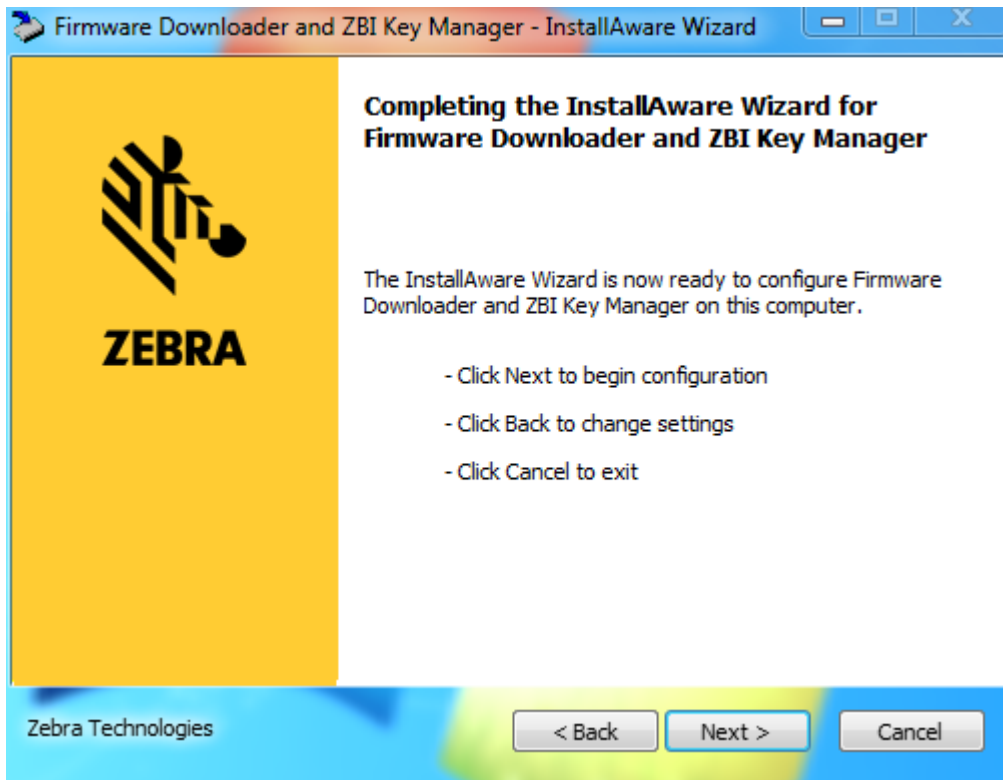
24. Click **Next**.



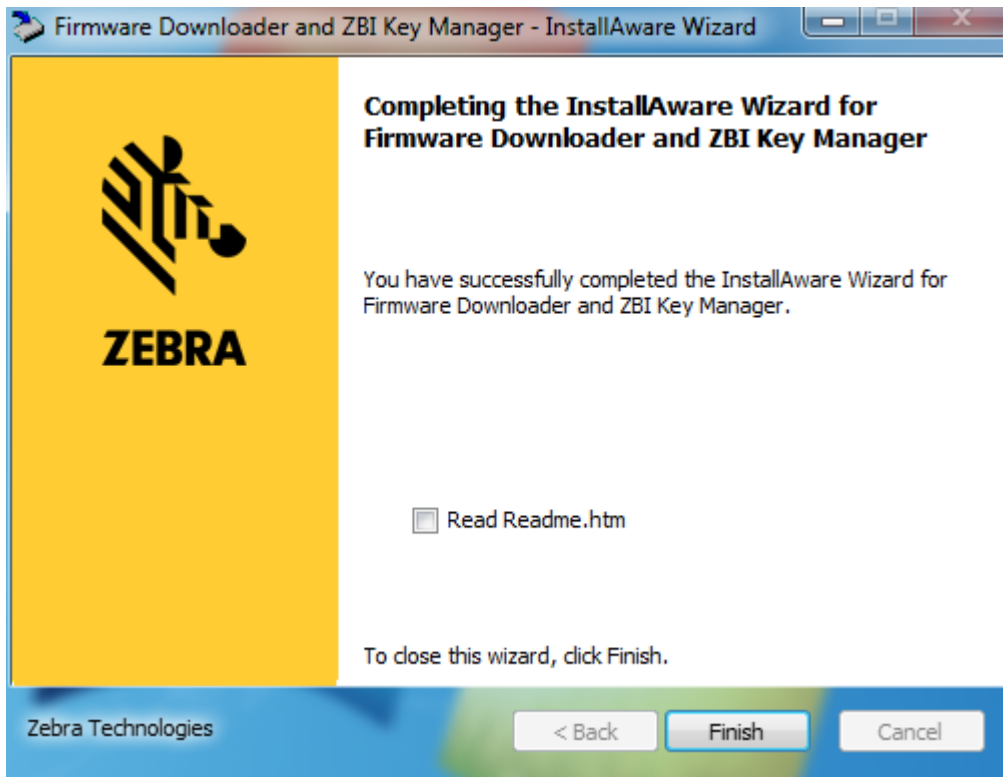
25. Place a check in the **I accept the terms of the license agreement** checkbox and click **Next**.




26. Click Next.

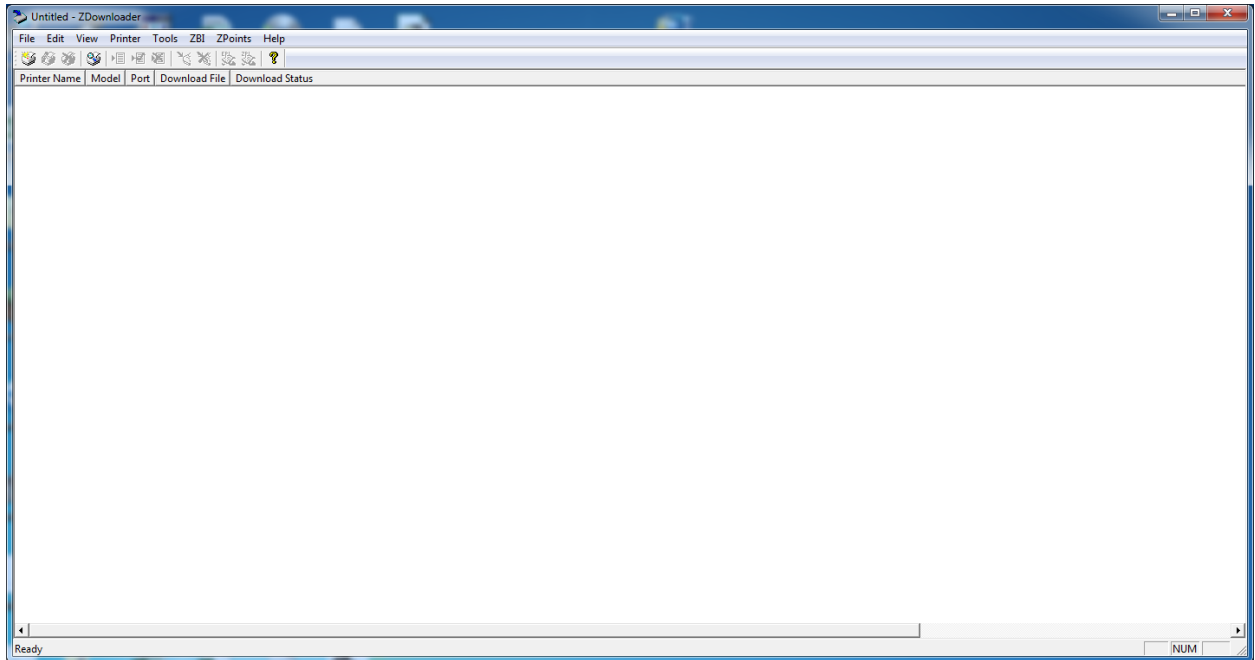


27. Click **Finish**.

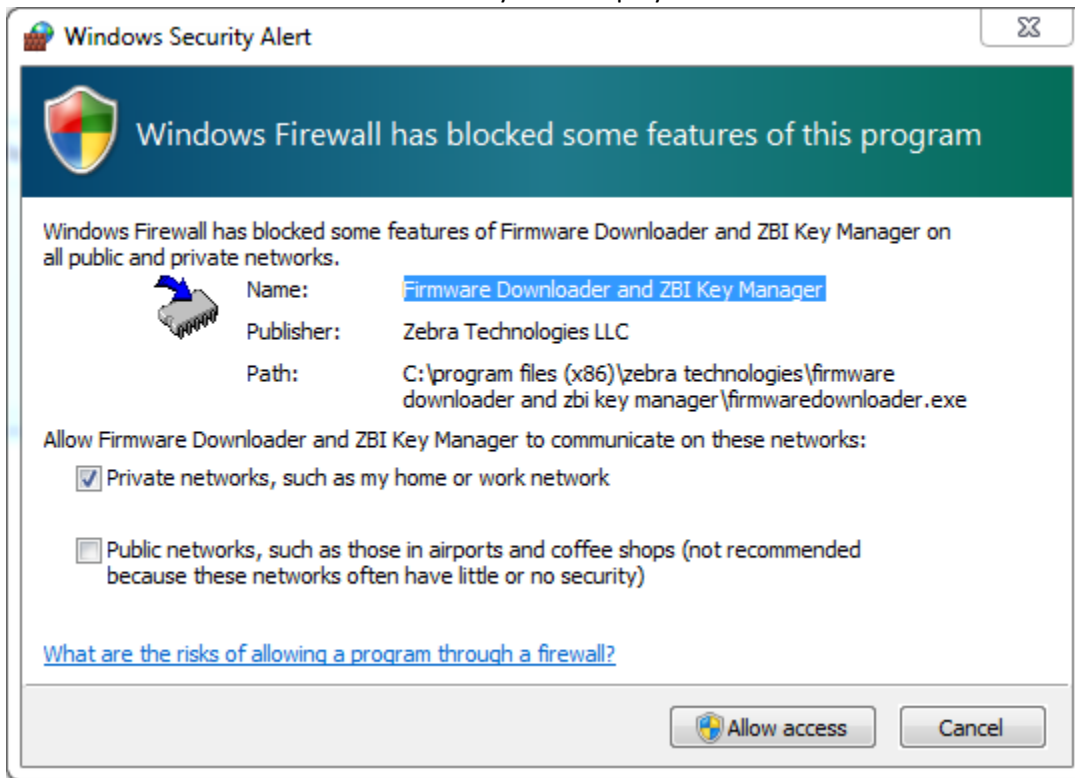


28. Navigate to Start → All Programs → Zebra Technologies → Firmware Downloader and ZBI Key Manager → FirmwareDownloader

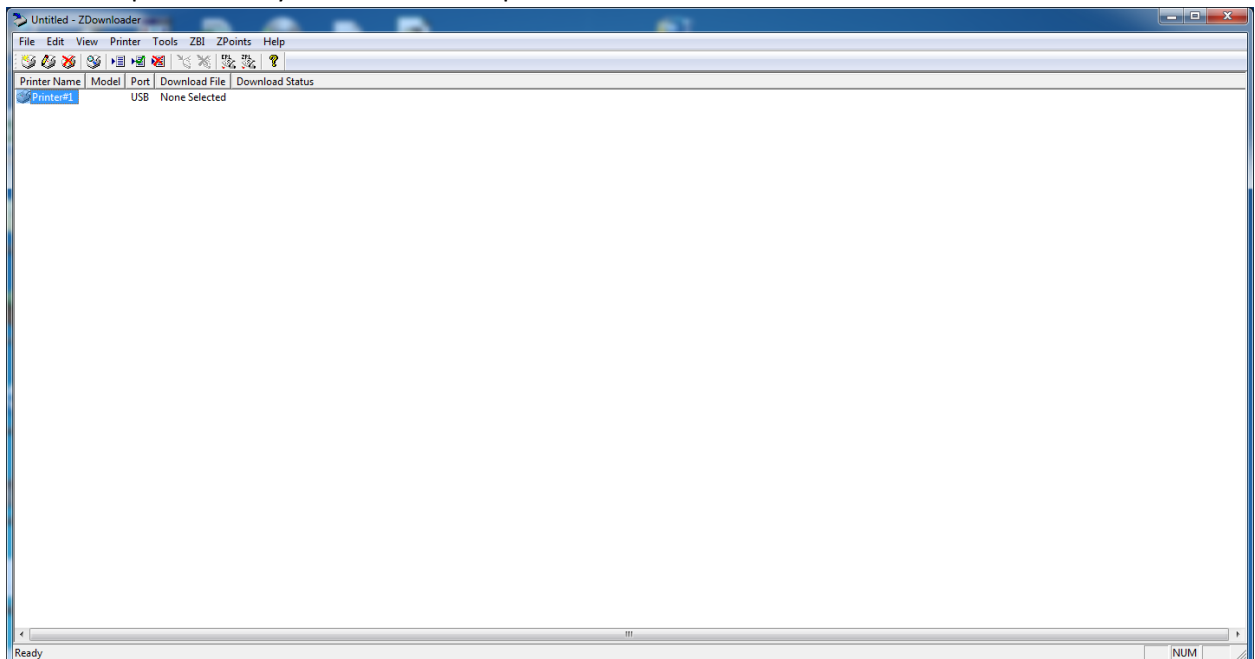
29. Click on the 4th icon from the left . When you hover your mouse over this icon it will display **Auto-Detect Printers.**




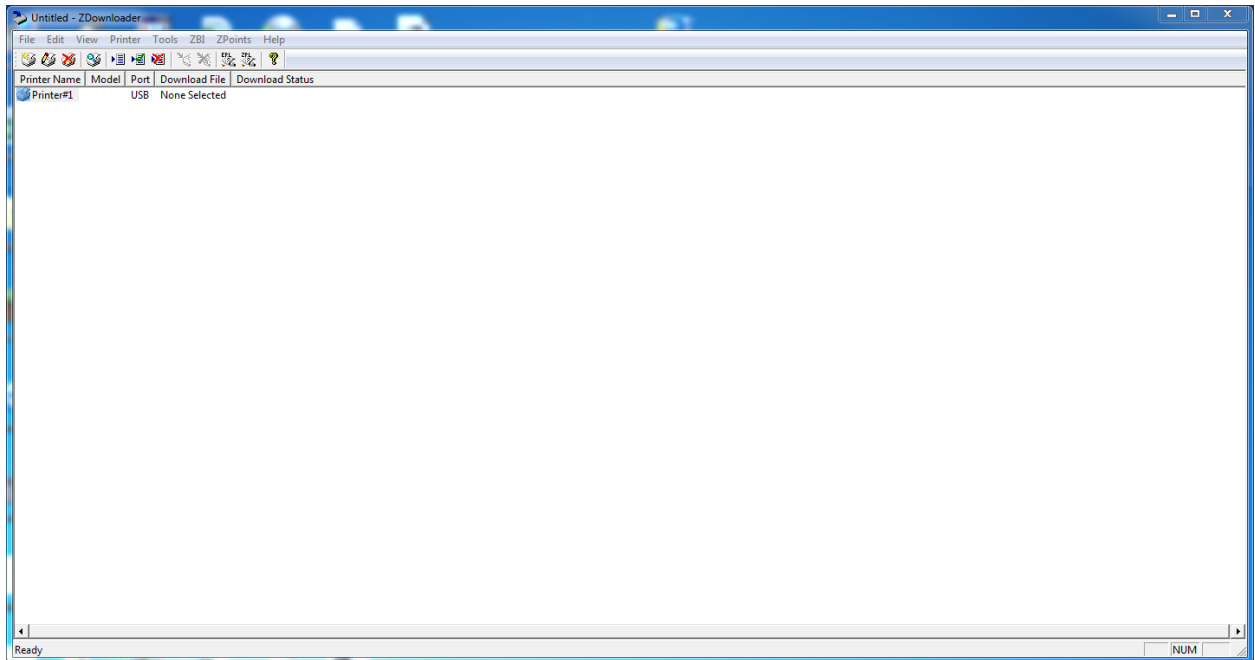
30. Click **Allow access** if the Windows Security Alert displays.



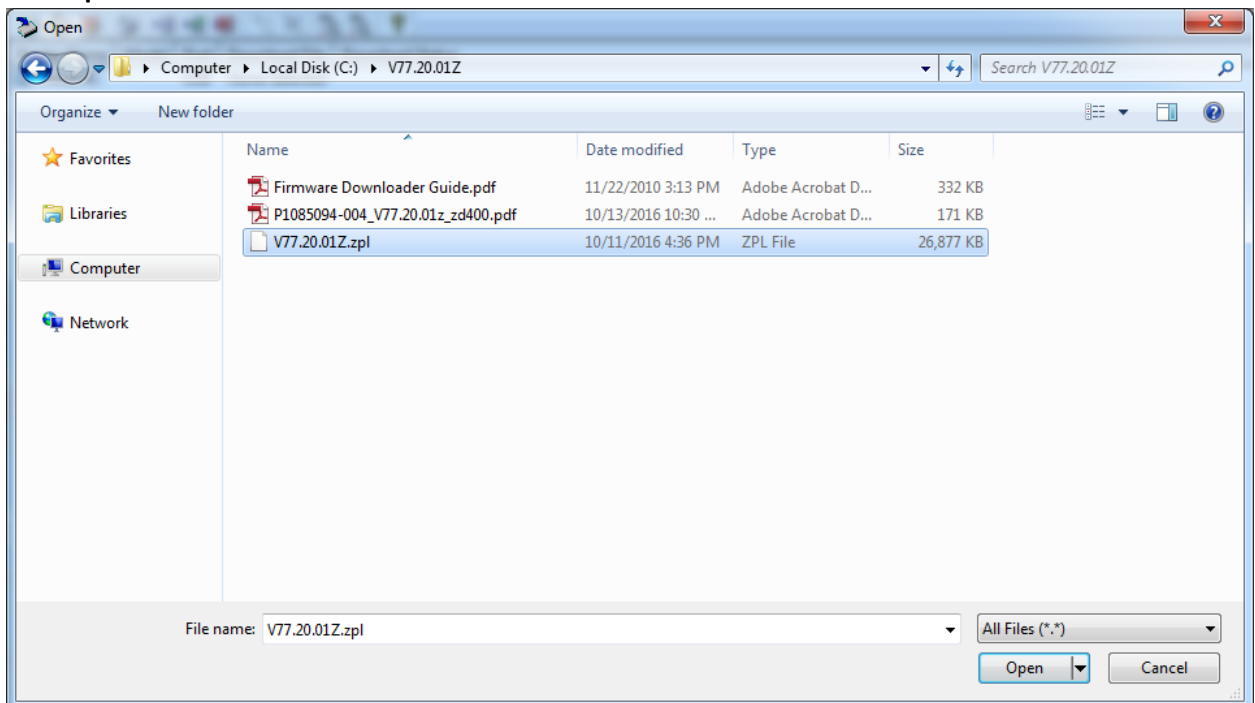
31. Select the printer that you would like to update the firmware on.




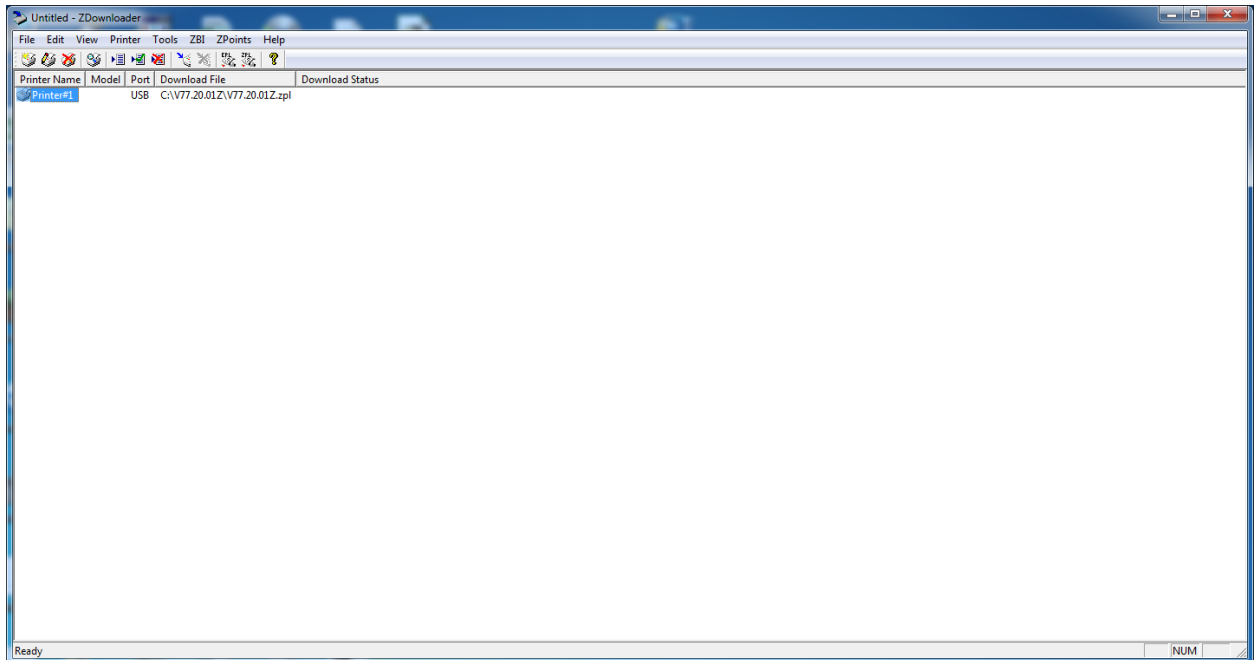
32. Click on the 5th icon from the left . When you hover your mouse over this icon it will display **Select Firmware.**



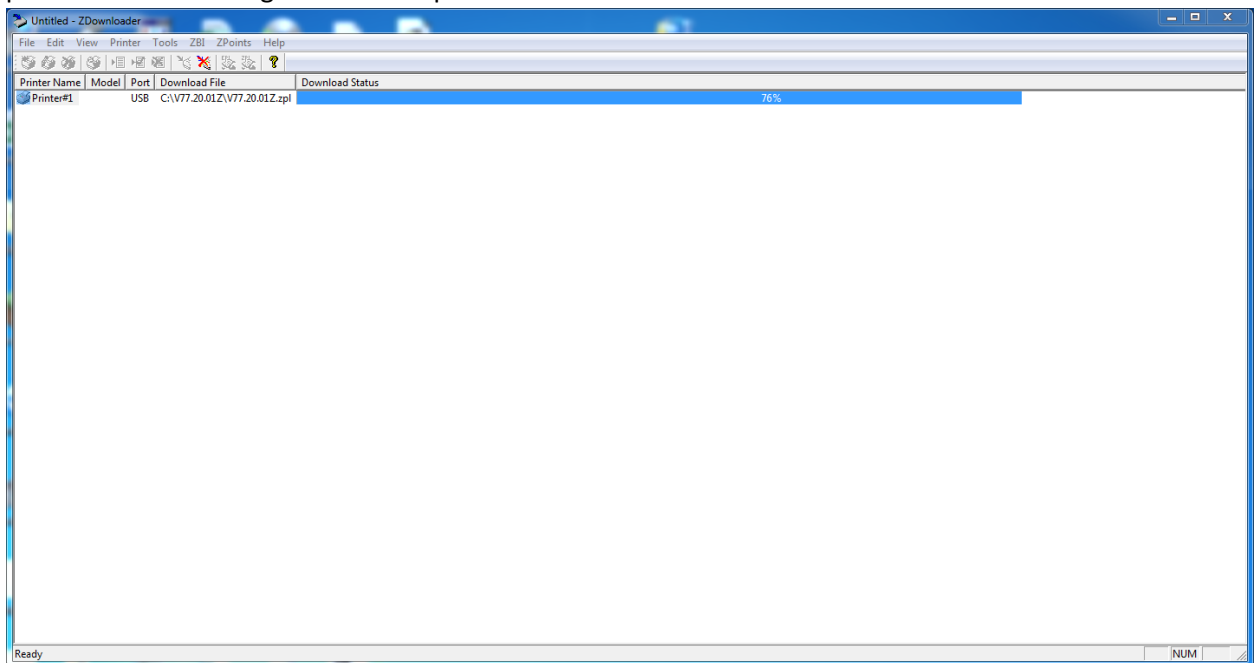
33. Navigate to the folder where you extracted your firmware during step 18, select the .ZPL file, and click **Open**.



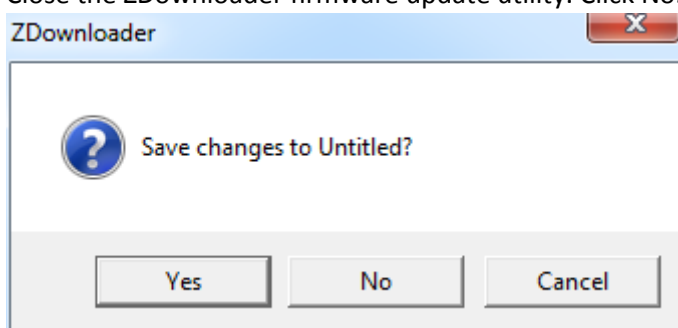
34. Click the 8th icon from the left . When you hover your mouse over this icon it will display **Download All.**



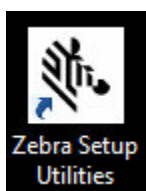
35. Do NOT power off or tamper with the printer during this process! Wait for the progress bar to reach 100%. The printer will install the firmware and power cycle. Wait for the 3rd light from the left on the top of the printer to stop blinking. Once the process has completed you will see the first light on the printer become solid green and the printer will self-calibrate.



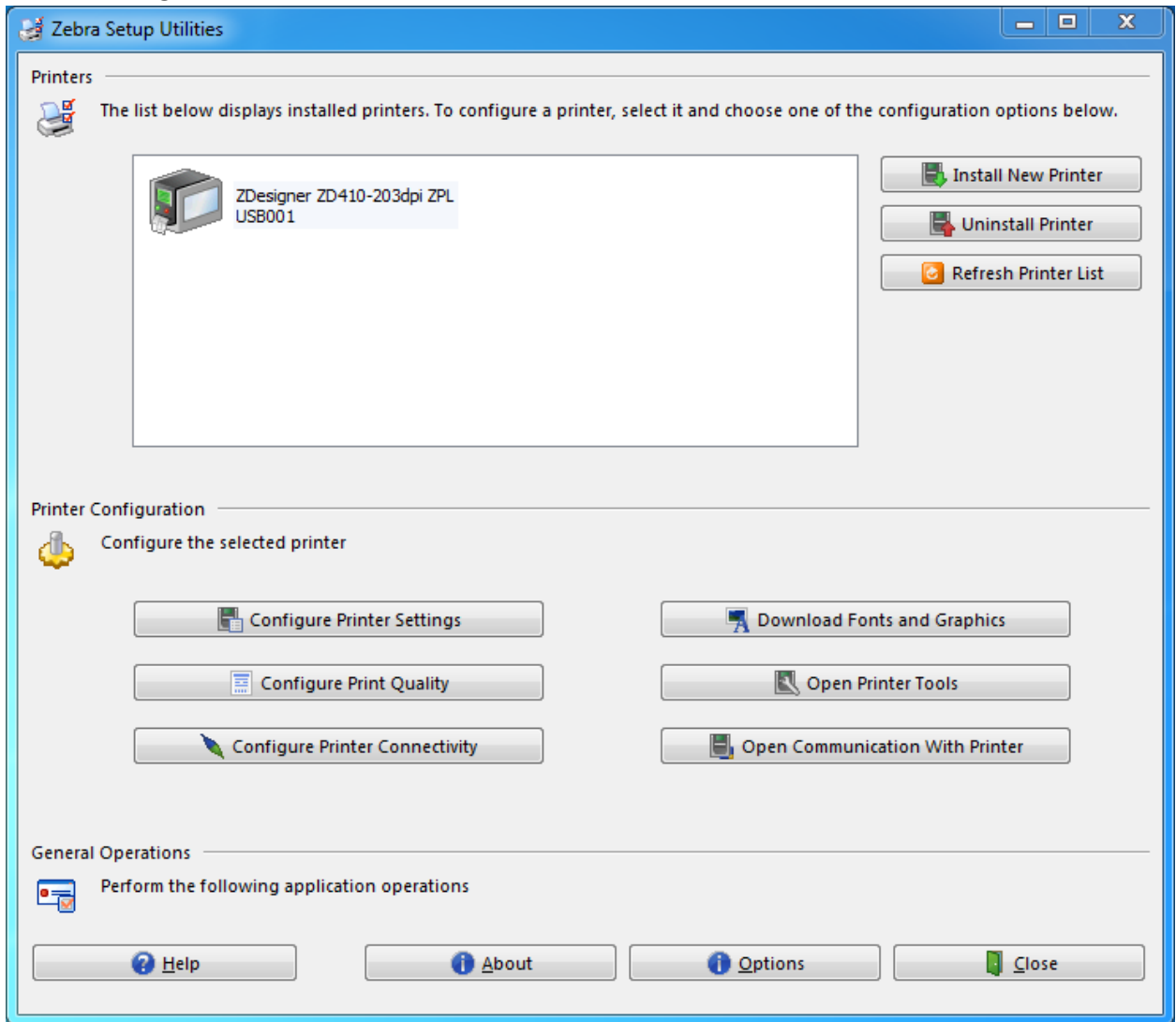
36. Close the ZDownloader firmware update utility. Click No.



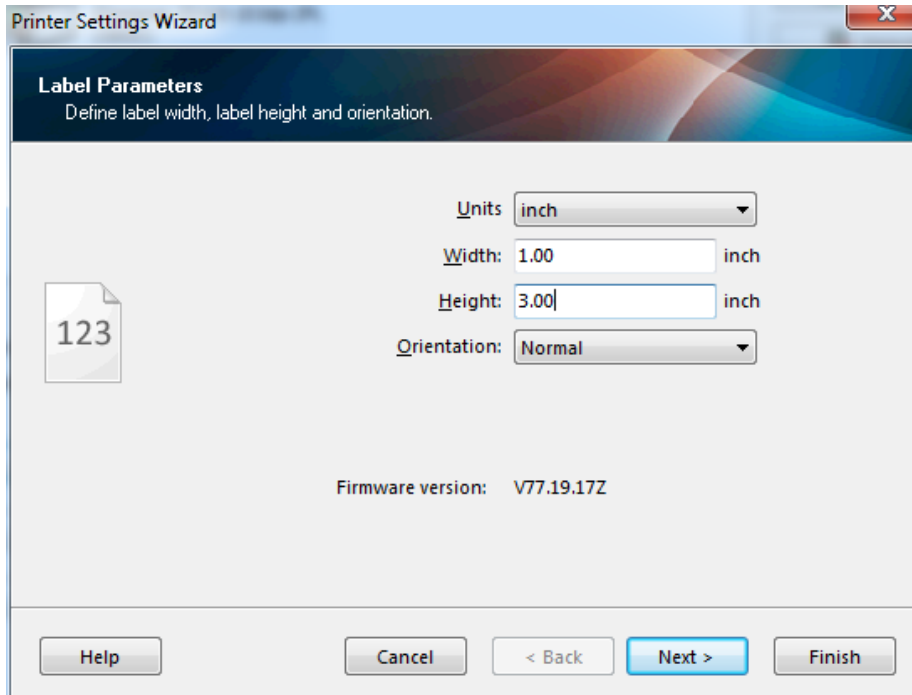
37. Navigate to your computer's Desktop and double-click the Zebra Setup Utilities icon.



38. Click on your Zebra **ZDesigner ZD410-203dpi ZPL** printer, so that it is highlighted, and click **Configure Printer Settings**.

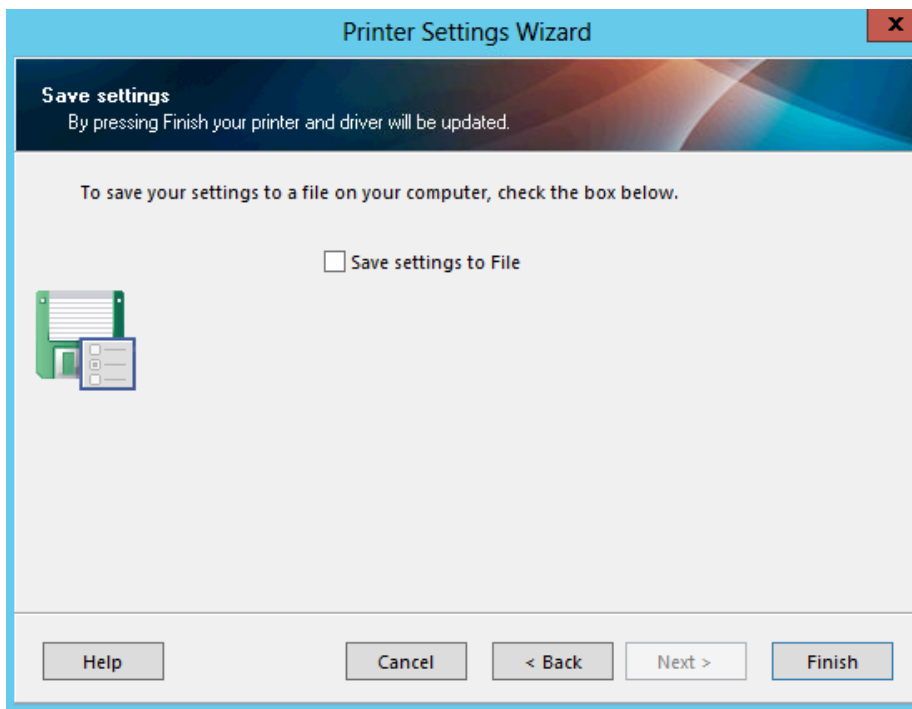


39. Verify that Units are inch. Enter **1.00** for **Width**. Enter **3.00** for **Height**. Verify that Orientation is Normal. Verify whether or not you have the latest Firmware version by comparing the firmware version listed with the firmware version of the latest update found here: <http://docs.enviromap.com/en/latest/requirements/index.html#printer-firmware-update-instructions>. Click **Next** until the button is grayed out, and unable to be clicked, and click **Finish**.



The screenshot shows the 'Printer Settings Wizard' window, specifically the 'Label Parameters' step. The window title is 'Printer Settings Wizard'. The subtitle is 'Label Parameters' with the instruction 'Define label width, label height and orientation.' On the left, there is a document icon with the number '123'. The settings are as follows: 'Units' is set to 'inch' in a dropdown menu; 'Width' is '1.00' with 'inch' to its right; 'Height' is '3.00' with 'inch' to its right; and 'Orientation' is set to 'Normal' in a dropdown menu. Below these settings, it says 'Firmware version: V77.19.17Z'. At the bottom, there are five buttons: 'Help', 'Cancel', '< Back', 'Next >', and 'Finish'. The 'Next >' button is highlighted in blue, indicating it is the active step.

TO



The screenshot shows the 'Printer Settings Wizard' window, specifically the 'Save settings' step. The window title is 'Printer Settings Wizard'. The subtitle is 'Save settings' with the instruction 'By pressing Finish your printer and driver will be updated.' Below this, it says 'To save your settings to a file on your computer, check the box below.' There is a checkbox labeled 'Save settings to File' which is currently unchecked. To the left of the checkbox is an icon representing a folder and a document. At the bottom, there are five buttons: 'Help', 'Cancel', '< Back', 'Next >', and 'Finish'. The 'Next >' button is highlighted in blue, indicating it is the active step.

40. If the firmware listed on the requirements website is newer than the firmware listed under the Printer Settings Wizard, you did something wrong and need to go back to step 15. If the firmware is up to date, then you have successfully completed the firmware update. Kudos to you!

